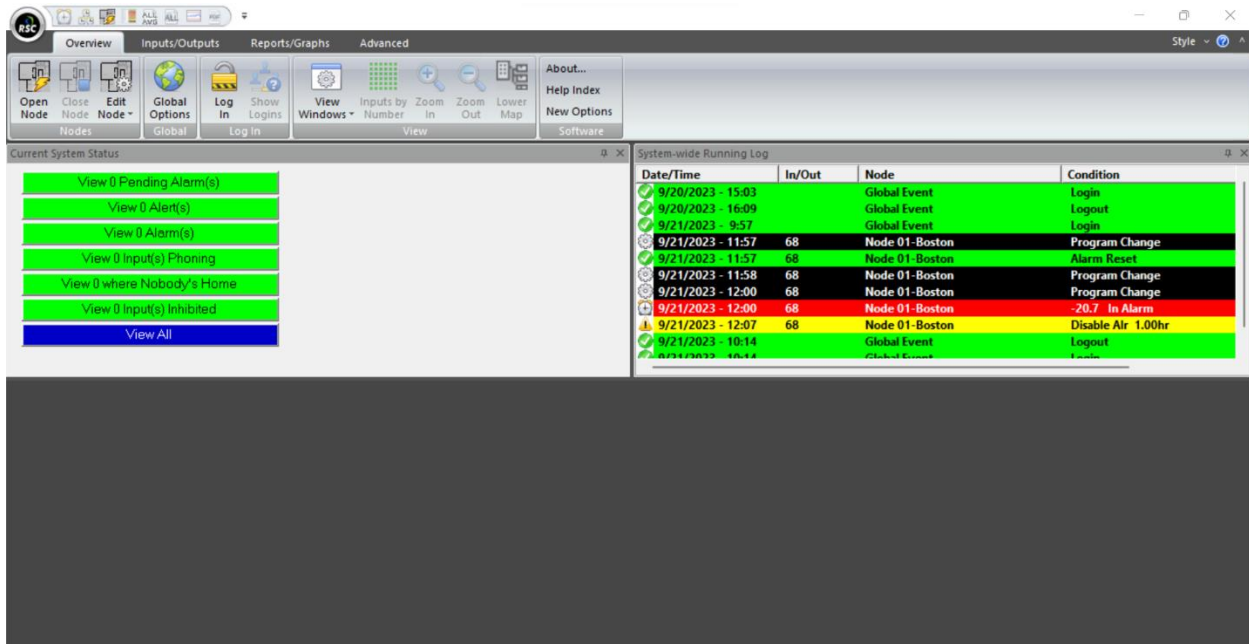


# Workstation – Logging In

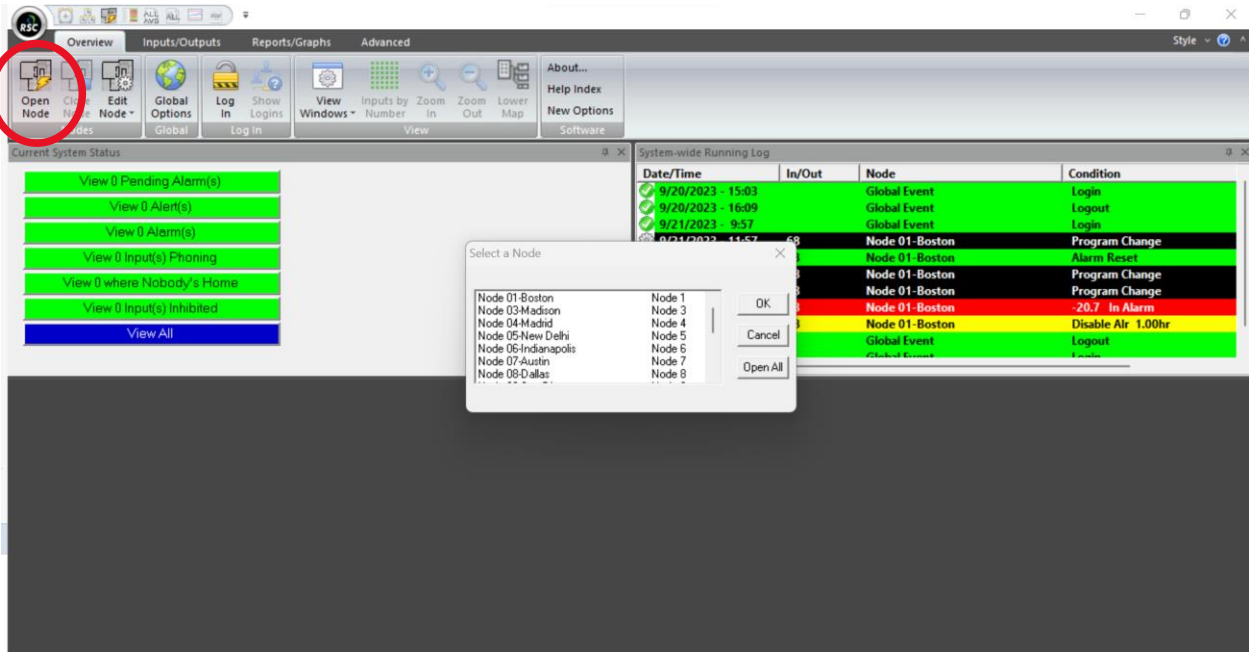
1. Once you have launched the Rees Workstation software from your desktop, enter you login ID and Password then select “OK”.



2. If your screen appears as the image above, you will need to open the Node you wish to view



3. Select "Open Node" in the top left of the screen. Then select the Node that you want to open and select "OK".



4. Once opened, you will be able to view and interact with your Node.

