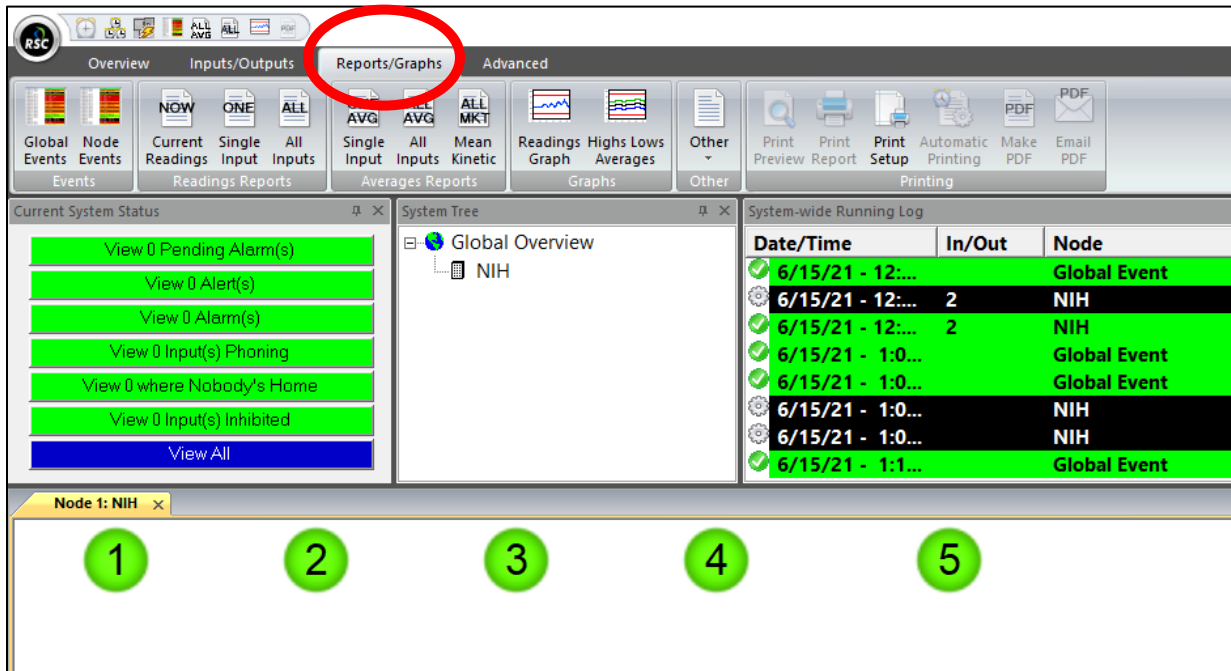
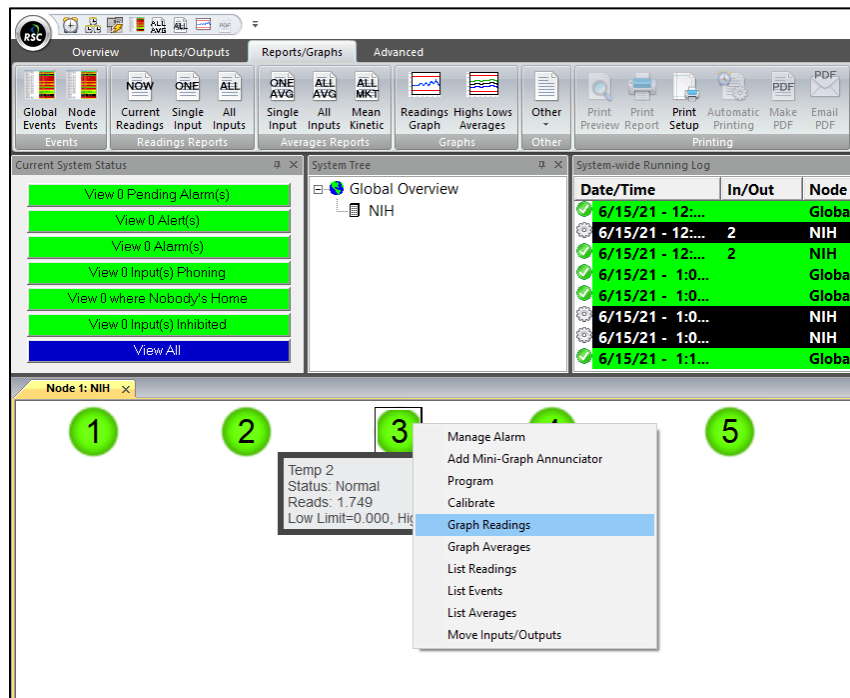


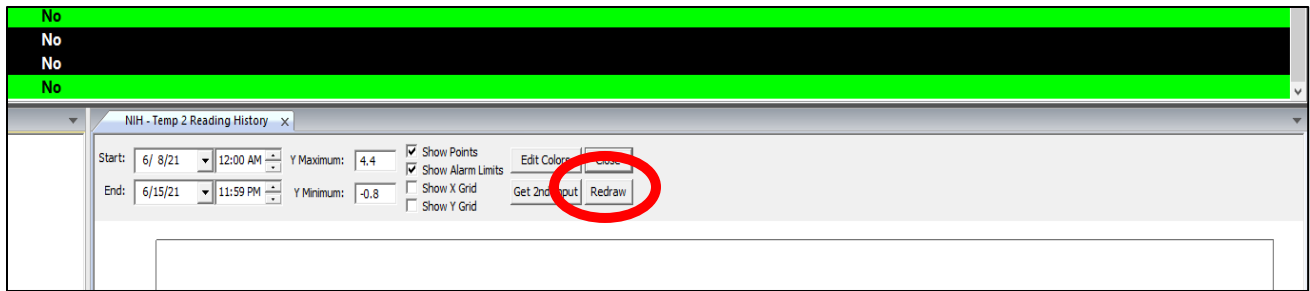
Workstation – Creating a Readings Graph



1. The first way that a graph can be generated is by selecting the “Reports/Graphs” tab at the top of the workstation. From this tab, you can select a variety of graph and/or report options.



2. The second way is to right click on an input and then select “Graph Readings”



3. Once a graph has been created, you will have the option to select a different time frame or Y-Axis to modify the information being shown. You will need to select "Redraw" for any changes to be displayed.