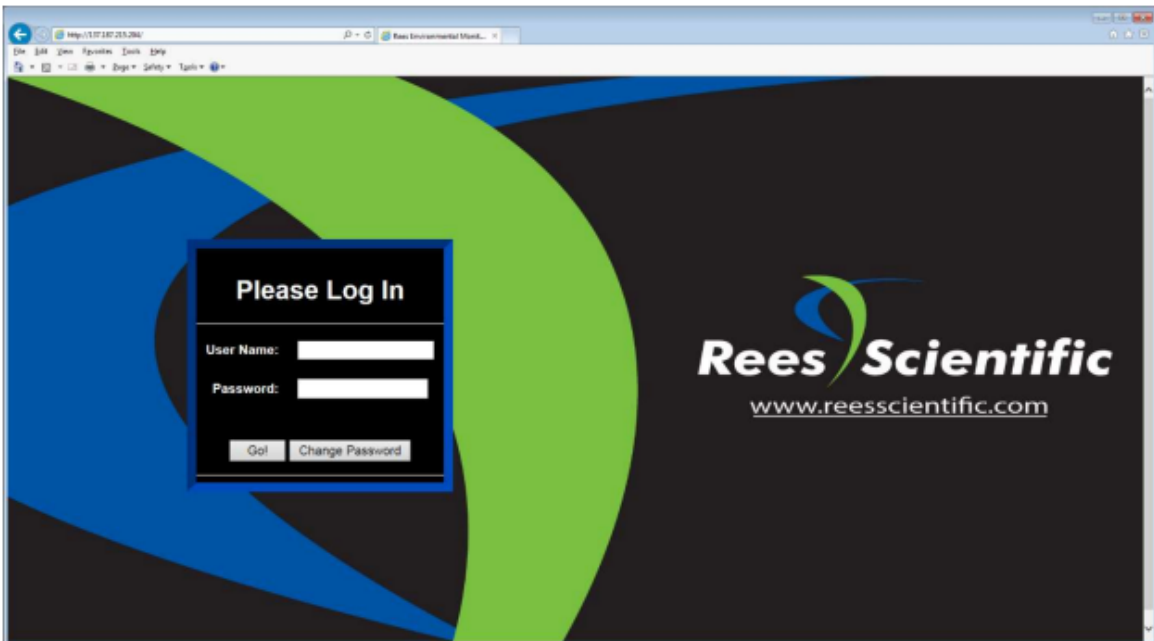


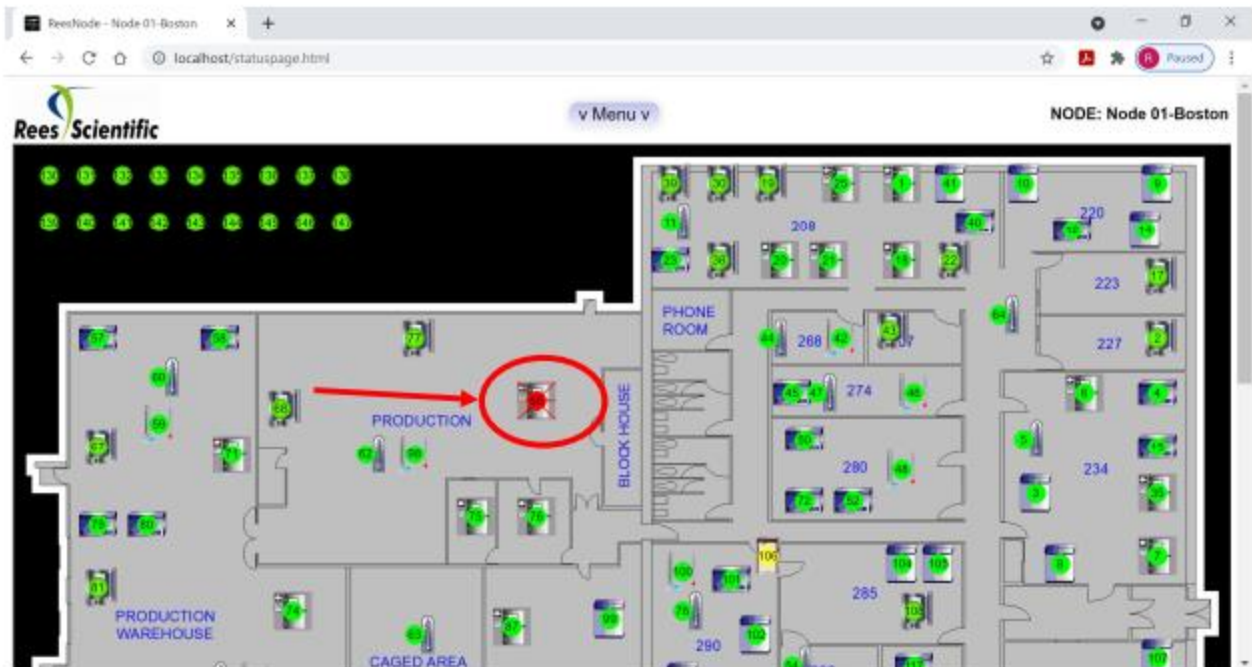
Rees Presidio “On the Go” Web Browser

Inhibiting an Alarm Condition

1. To access the Rees system, you must be on the Cleveland Clinic network (either onsite or VPN). Type in your URL into the bar at the top of any web browser. i.e. <http://cc-clrees57> (Pharmacy).
2. Log in to the Rees system with your department’s user name and password.



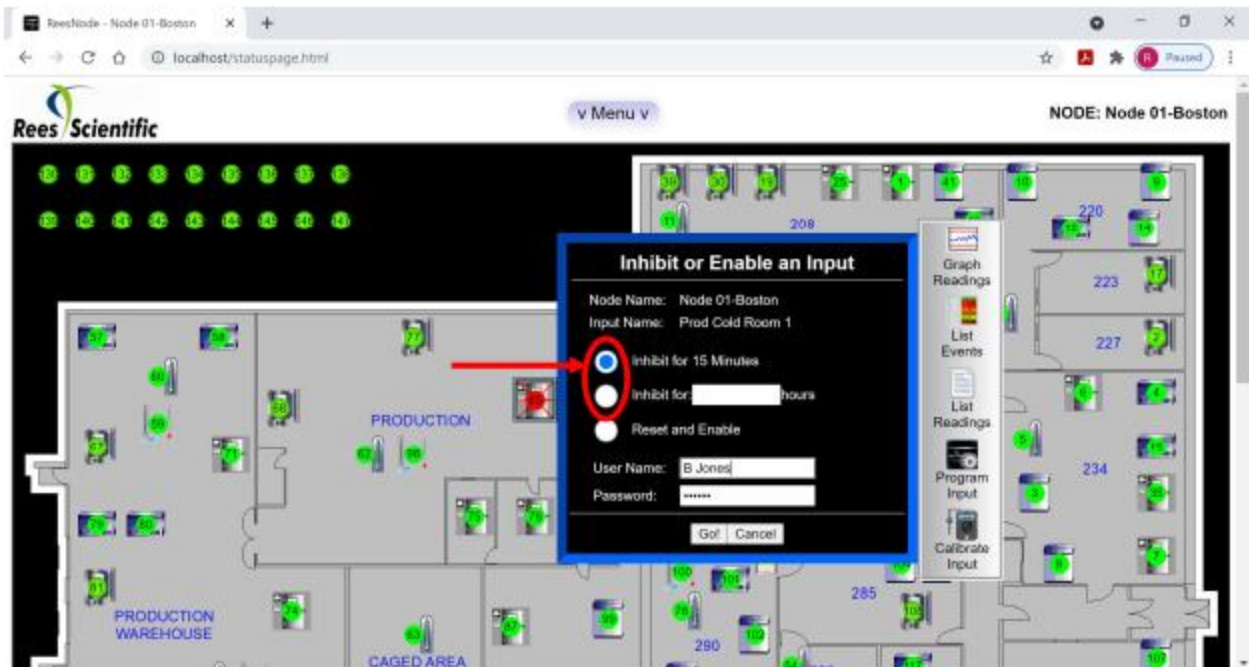
3. Click on input in alarm.



4. The following window will be displayed. Click "Manage alarm" icon



5. Select duration from menu to inhibit alarm. Then enter your User name and password.



6. Input icon will turn yellow indicating input was inhibited for xxxx time.



7. Click on inhibited input and it will show when the alarm will re-activate.

The screenshot shows a web browser window displaying the Rees Scientific monitoring interface. The browser's address bar shows 'localhost/statuspage.html'. The interface includes a logo for 'Rees Scientific', a 'v Menu v' button, and the text 'NODE: Node 01-Boston'. The main area is a floor plan with various rooms and sensors. A data popup is visible over the floor plan, containing the following information:

Input:	Prod Cold Room 1
Reading:	5.1 Deg. C
Units:	Low=2.0, High=6.0
Status:	Inhibited
Next Action:	Reactivates in 114802.2 Hours

The 'Status: Inhibited' and 'Next Action: Reactivates in 114802.2 Hours' rows are circled in red. Below the popup is a menu with options: Manage Alarm, Graph Readings, List Events, List Readings, Program Input, Calibrate Input, Zoom Up or Down, and Move Inputs. The floor plan includes labels for 'PRODUCTION WAREHOUSE', 'CAGED AREA', and various room numbers like 208, 220, 223, 227, 234, 268, 274, 280, 285, and 290.